

Steel Mains Distribution

AMF2000S-1

Description

Three-phase auto mains fail (AMF) unit allows automatic connection of a secondary electrical supply to a load upon failure of the primary. Mechanically and electronically interlocked 4 Pole ACB's supplying a common rated HDHC copper busbar system and load connection pads. No volt connection for remote Generator start (N/O & N/C). Auxiliary power supply for Generator battery charging/jacket water heater. 3 Position key switch for Auto, Test and Generator run. Supply availability neon's for visual representation of status. Incoming supply adjustable undervolt and time delay relays for setting of individual supply parameters. All equipment housed in a steel enclosure with internal and external brass earth bar. Complete unit mounted within a galvanised steel crash frame with forklift pockets and lifting eyes.



Enclosure

Black (RAL7035) textured powder coated Zintec steel construction with phosphate welds. Separate incoming and outgoing (with control gear) compartments with internal protection shrouds and external panel key lock doors. Aluminium gland plate. Assembled to IP55.

Connections

	Termination	Protection
Input 1 (Mains)	3P+N+E Hardwire	2XXXA 4 Pole ACB
Input 2 (Generator)	3P+N+E Hardwire	2XXXA 4 Pole ACB
Outgoing (Load)	3P+N+E Hardwire	N/A
Aux	32A 400V 3P+N+E Socket	32A 4 Pole 30mA RCBO

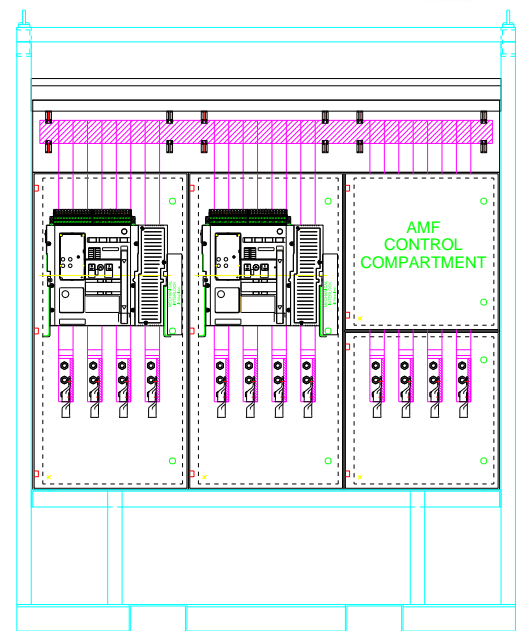
(All MCB's have C-Type trip curves. All RCD's and RCBO's are Type A)

Dimensions

Approx H 2100mm x W 1430mm x D 650mm

Weight

Approx 750kgs



RENTAL CENTRES

Scotland & North ide Rental Ltd, Unit 8 Shawfield Trade Park, Rutherglen, Glasgow. G73 1DB Tel: 0141 647 0850

The Midlands ide Rental Ltd, Unit 4A & D, Zone 2, Burntwood Business Park, Ring Road, Burntwood, Staffs. WS7 3JQ Tel: 01543 674 759

The South ide Rental Ltd, Unit 13 Thurrock Trade Park, Oliver Road, Grays, Essex. RM20 3AL Tel: 01708 863 963

