

Information Sheet for AMF1600-2000Sc-1

AMF1600-2000Sc-1 Product Description

Three-phase + neutral automatic mains failure (AMF) unit allows automatic connection of a secondary electrical supply to a load upon failure of the primary. Mechanically and electronically interlocked 4 Pole ACB supplying a common rated HDHC copper busbar system and load connection pads.

Features and Benefits:

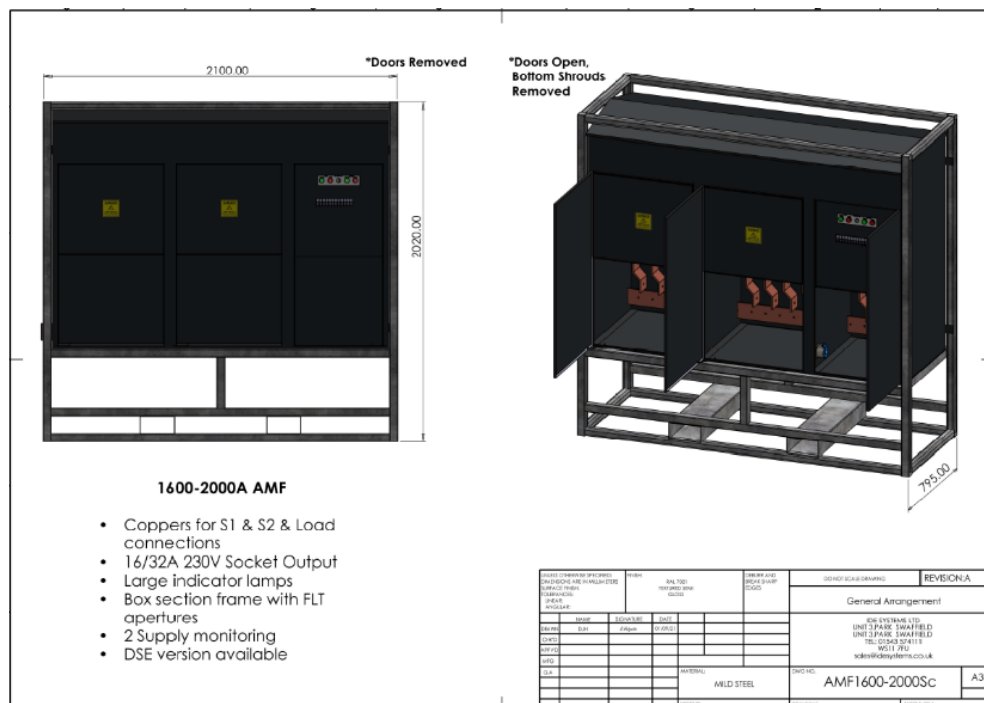
- > Auxiliary power supply for Generator battery charging/jacket water heater.
- > 3 Position key switches for Auto, Test and Generator run.
- > No volt connection for remote Generator start (N/O & N/C).
- > LEDs for visual representation of status.
- > Incoming supply adjustable under volt and time delay relays for setting of individual supply parameters.
- > All equipment housed in a steel enclosure with internal and external earth connection point.
- > Complete unit mounted within a galvanised steel crash frame with forklift pockets.

Popular Applications

- > Construction sites
- > Events and festivals
- > Hospital sites
- > Data centres
- > Commercial facilities



Technical Information



Product Configuration

Inlet	Phase	Protection	Quantity	IP Rating
1600A-2000A	3PH	ACB	2	IP54
Outgoing	Phase	Protection	Quantity	IP Rating
1600A-2000A	3PH	N/A	1	IP54
Aux	Phase	Protection	Earth Leakage	IP Rating
32A	1PH	RCBO	30mA	IP44

Other Features and Mechanical Information

Phase Indication	Power Indication	Lifting	Frame	Switching Method:
Upon request	LED	From crash frame	Optional	ACB
Enclosure	Overall IP Rating	Size (mm)	Weight (kg)	Monitoring:
Powder coated steel	IP44	H:2020 x W:2100 x D:795	1100	Deep Sea/ Supply Monitoring Relay
Power Monitoring	Warranty	Colour		
Upon request	12 months	Upon request		

Manufacturing Standard IEC 61439: Part 2 etc

AMF1600-2000Sc-1 Version1 02/09/2021