

# Information Sheet for DS2

## DS2 Product Description

Designed to supply power to a range of mobile unit diagnostic modalities such as CT, MRI and PET scanners. Our MRI Connection Points are a vital component of most MRI installation projects. The DS2 are long lasting, robust with anti-corrosion.

## Features and Benefits:

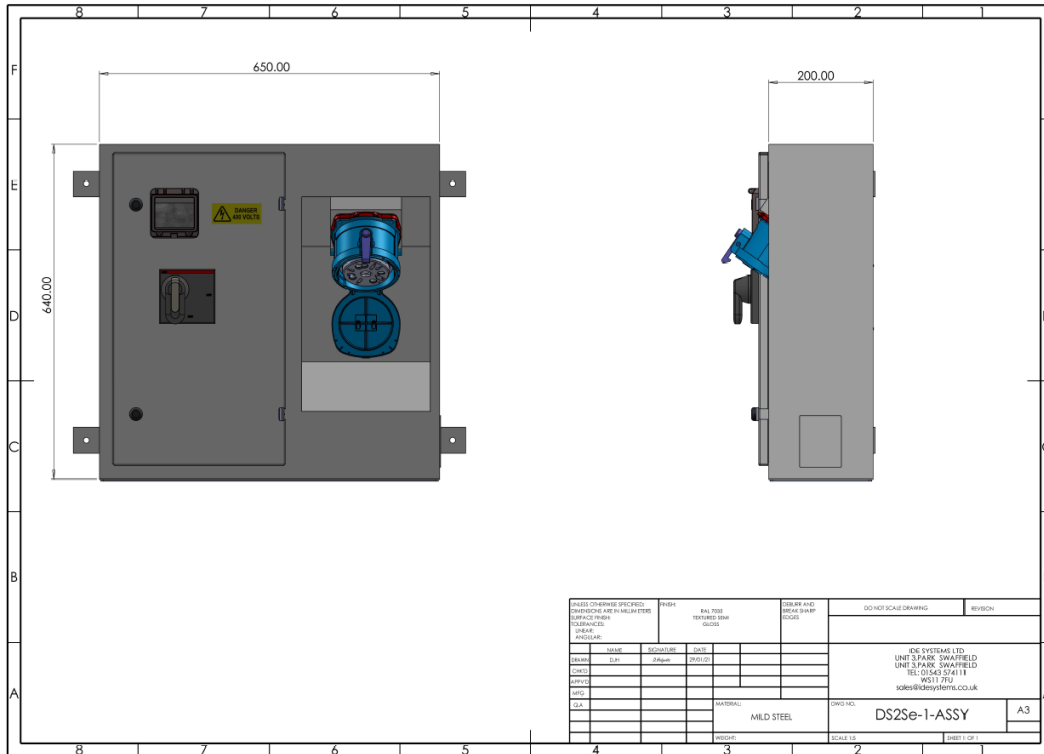
- > *Indoor & outdoor use*
- > *Wall Mounted or Within a Stainless-Steel Crash Frame – manufactured by IDE in the UK.*
- > *Incoming hardwire connection to M10 terminals with 250mm spreading distance.*
- > *Door interlocking handle with padlock facility.*
- > *2 No. CAT 5e IP67 data sockets and a 2 wire IP54 Telephone connection point, for use by others as required.*

## Popular Applications

125A or 250A Three-phase mains distribution unit designed to supply Mobile MRI, CT and PET scanners.



# Technical Information



## Product Socket Configuration

Inlet	Phase	Protection	Earth Leakage	IP Rating
3P + N + E (Hardwire)	3	N/A	N/A	54
Outgoing	Phase	Protection	Earth Leakage	IP Rating
<b>Option 1:</b>				
250A DS2 Socket	3	250A 4 Pole MCCB	Yes	54
<b>Option 2:</b>				
125A Standard Socket	3	125A 4 Pole MCCB	Yes	54

## Other Features and Mechanical Information

Phase Indication	Power Indication	Lifting	Frame/GRP
On request	On request	N/A	Optional
Enclosure	Overall IP Rating	Size (mm)	Weight (kg)
Powder Coated Stainless Steel (RAL 7035)	54	H640xW650xD200	Approx. 32kg
Warranty	CAT 5e IP67 data sockets	2 wire IP54 Telephone connection	
12 months	2	Yes	

**Manufacturing Standard**  
**IEC 61439: Part 2 etc**  
**ISO 9001-2015**

DS2 Version1 05/03/2021