

# Information Sheet for Load Bank Connection

## Load Bank Connection Product Description

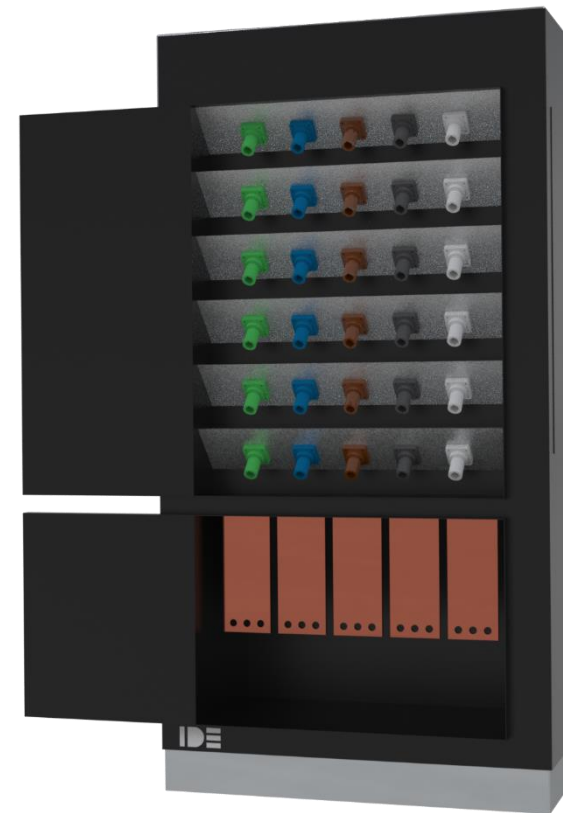
Our Load Bank Connection (LBC) can be fitted inside or outside of a building, allowing a safe and quick connection of a testing load bank to your back-up generator when it is undergoing testing/maintenance.

### Features and Benefits:

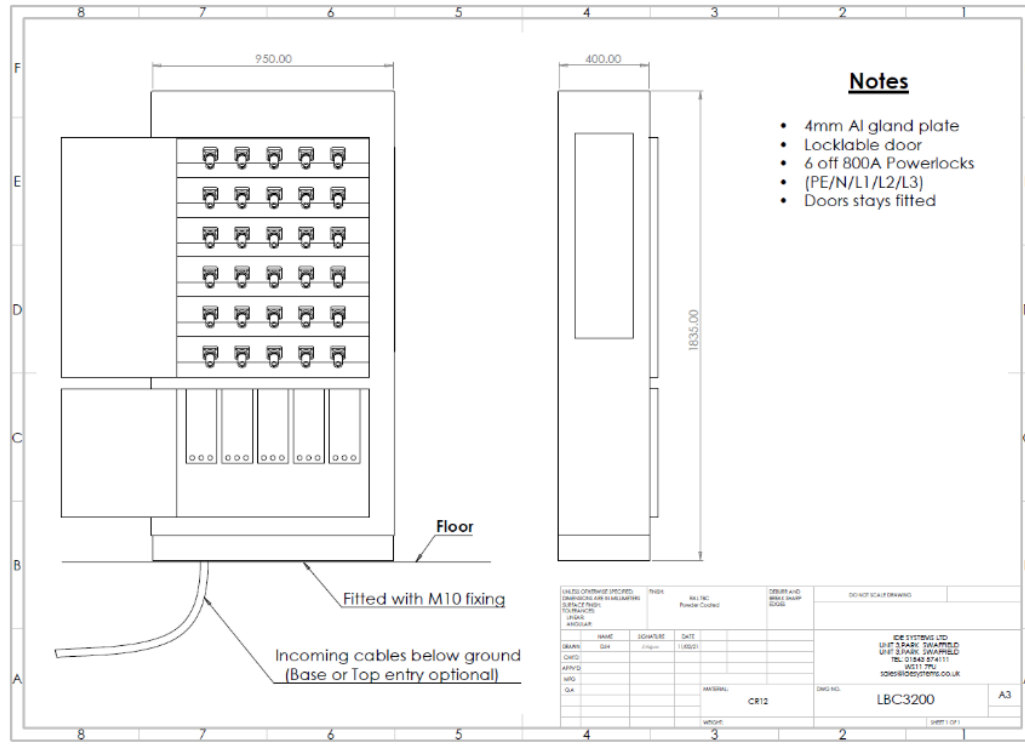
- > Powerlock type (Source) connections for a quick easy connection
- > Powder coated Stainless Steel enclosure
- > Floor standing steel enclosure fitted with M10 fixing points
- > Slim Design

### Popular Applications

The LBC is used when the back-up generator is undergoing testing/maintenance. Regular load banking is strongly advised to ensure that your generator will perform when the need arises. Using a LBC reduces connection times and speeds up the load bank testing process. It can also remove the need for cables to run throughout the building to the back-up generator.



## Technical Information



### Product Socket Configuration

Inlet	Phase	Protection	Quantity	IP Rating
Fully rated copper capable to suit 6 x M12 connections	3	N/A	N/A	N/A
Outgoing	Phase	Protection	Earth Leakage	IP Rating
6 x 800A 3P+N+E Powerlock type (Source)	3	N/A	N/A	54

### Other Features and Mechanical Information

Phase Indication	Power Indication	Lifting	Frame
On request	On request	Lifting points	On request
Enclosure	Overall IP Rating	Size (mm)	Weight (kg)
Powder Coated Stainless Steel (RAL 7021)	54	H1835xW950xD400	Approx. 150kg
Power Monitoring	Warranty	Base or Top Entry:	
On request	12 months	On request	

Manufacturing Standard  
IEC 61439: Part 2 etc  
ISO 9001-2015

LBC3200 Version1 17/03/2021