

# Information Sheet for AMF125-250Sc-1

## AMF125-250Sc-1 Product Description

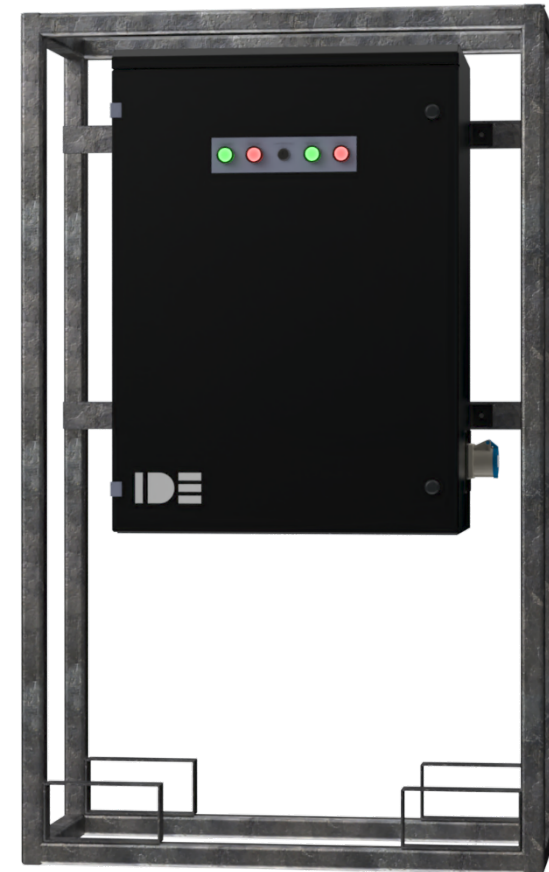
Three-phase + Neutral automatic mains failure (AMF) unit allows automatic connection of a secondary electrical supply to a load upon failure of the primary. Mechanically and electronically interlocked 4 Pole rated contactors supplying fully rated stud terminals.

## Features and Benefits:

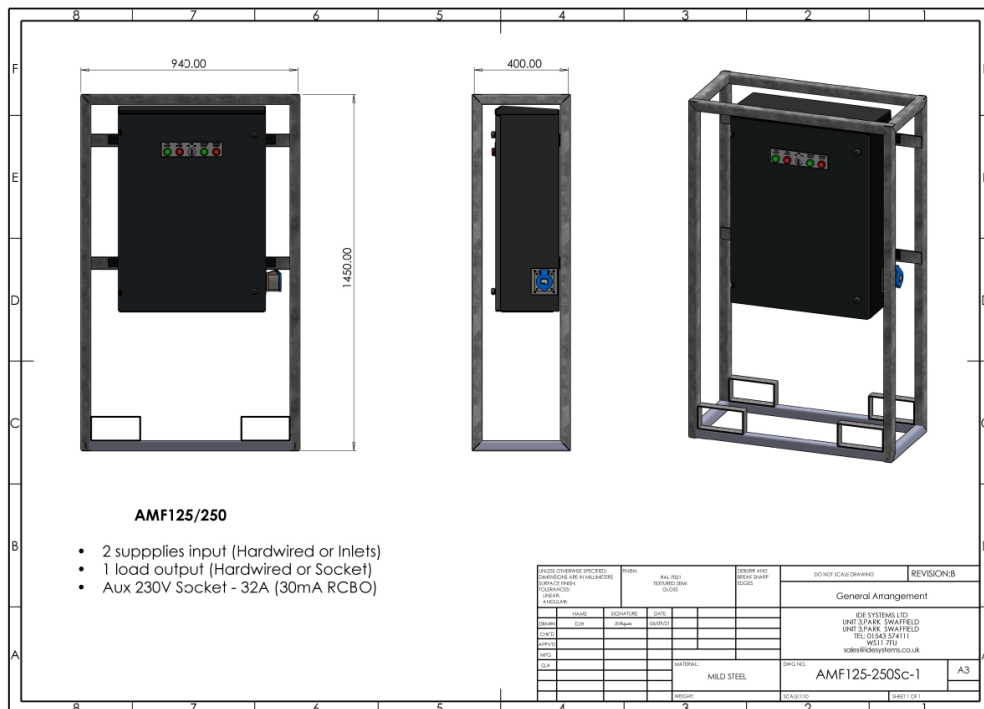
- > Auxiliary power supply for Generator battery charging/jacket water heater.
- > 3 Position key switches for Auto, Test and Generator run.
- > No volt connection for remote Generator start (N/O & N/C).
- > LEDs for visual representation of status.
- > Incoming supply adjustable under volt and time delay relays for setting of individual supply parameters.
- > All equipment housed in a steel enclosure with internal and external earth connection point.
- > Complete unit mounted within a galvanised steel crash frame with forklift pockets.

## Popular Applications

- > Construction sites
- > Events and festivals
- > Hospital sites
- > Data centres
- > Commercial facilities



## Technical Information



### Product Configuration

Incoming	Phase	Protection	Quantity	IP Rating
125A-250A	1PH or 3PH	N/A	2	IP44
Outgoing	Phase	Protection	Quantity	IP Rating
125A-250A	1PH or 3PH	N/A	1	IP44
Aux	Phase	Protection	Earth Leakage	IP Rating
32A	1PH	RCBO	30mA	IP44

### Other Features and Mechanical Information

Phase Indication	Power Indication	Lifting	Frame	Switching Method:
Upon request	LED	From crash frame	Optional	Contactour Based
Enclosure	Overall IP Rating	Size (mm)	Weight (kg)	Monitoring:
Powder coated steel	IP44	H:1450 x W:940 x D:400	85kg	Supply Monitoring Relay
Power Monitoring	Warranty	Colour		
Upon request	12 months	Upon request		

Manufacturing Standard  
IEC 61439: Part 2 etc  
AMF125-250Sc-1\_Version1\_04/2021