

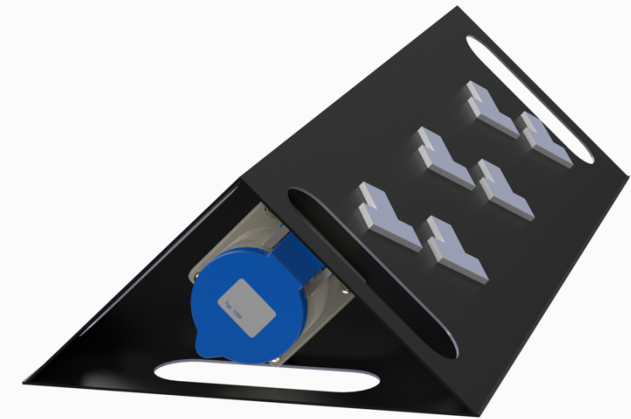
# Information Sheet for MD17

## MD17 Product Description

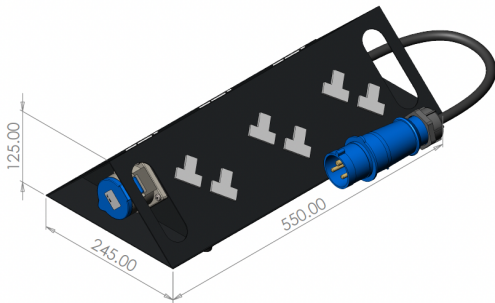
A 32A single-phase (230V) steel toblerone designed to distribute temporary power from one area to another.

The 32A plug and play distribution board is easy to relocate across site and blends in well with the surrounding environment.

Comes in a self-extinguishing enclosure, fully insulated and manufactured from hard butyl rubber. Resistant to atmospherics and chemical agents. IP55 Rated.



## Technical Information



### 32A 1PH Toblerone Distribution

#### In-

- 32A 230V 3 Pin trailing Plug (Unprotected)

#### OUT-

- 1 x 32A 230V IP44 Panel Socket (Feedthrough)  
- 6 x 13A 230V 2 Gang BS1363 Unswitched Panel Socket (Unprotected)

**RAL7021 (Grey)**

### Product Socket Configuration

Inlet	Phase	Protection	Earth Leakage	IP Rating
32A	1	3 pole 230V	n/a	44
Outgoing	Phase	Protection	Quantity	IP Rating
32A	1	3 pole 230V	1	44
13A	1	Twin 230V	6	44



### Other Features and Mechanical Information

Phase Indication	Power Indication	Lifting	Frame
Enclosure	Overall IP Rating	Size (mm)	Weight (kg)
		H125 x W245 x D550	6
Power Monitoring	Warranty		
	12 months		

Manufacturing Standard  
IEC 61439: Part 2 etc

MD17\_Version1\_01/2021