

Cabinet

- > Fitted with 2 x din rails for mounting breakers
- > Has up to 10 fixed outgoing sockets
- > Design & build options available
- > Own logo on cabinet can be applied

Our SD boards are ideal for mounting in secure generator/hybrid containers and for use on construction/infrastructure projects. Manufactured in the UK these boards are robust, versatile and long lasting.

Lockable incomer breaker door

Incomer

Incoming breaker size, 63A or 125A.
Incomer breaker connection:
Can be fitted with ELR as an option
Mounting:

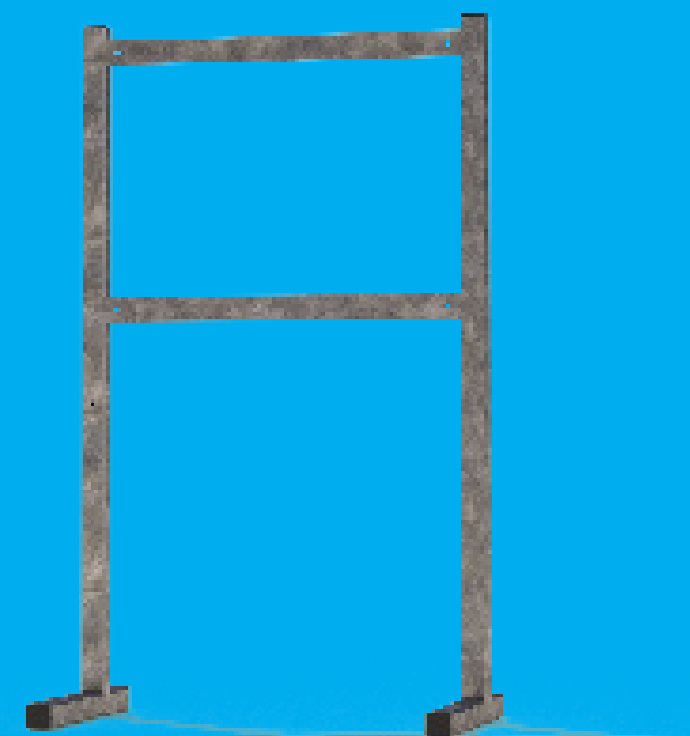
- > Panel mount
- > Hard wired

Outgoing Ways

- > 16A Single phase
- > 16A Three phase
- > 32A Single phase
- > 32A Three phase
- > 63A Single phase
- > 63A Three phase

Mounting

Standard mounting fitting is 4 x M8 brackets welded on both sides of the cabinet. Other options:



The SD board can be fixed onto leg frames.

Recommended cabin set size:

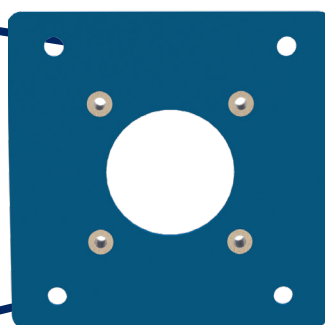
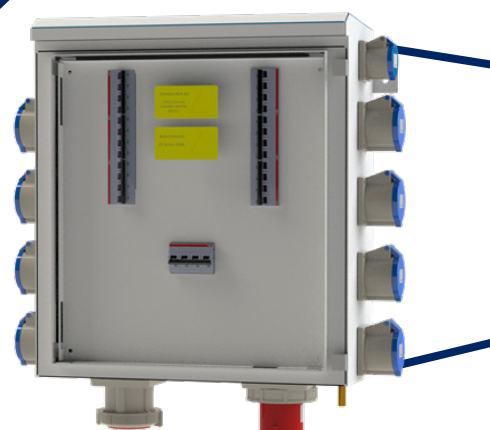
63A - 2 to 6 Cabins
125A - 4 to 8 Cabins

Cabinet Configuration

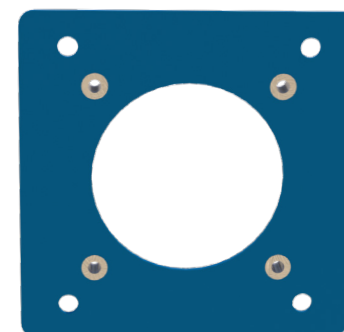
IDE offer a range of 'adaptor plates' that can be used in conjunction with the cabinet to change socket outgoing ways.

The cabinet comes fitted with apertures that will accommodate 63a sockets, either 10 socket outgoing ways.

Adaptor plates will enable the user to adapt to 32a & 16a sockets.



63A to 16A



63A to 32A



Blank plate

Wall Mount
&
Standalone Available

Material

We offer 3 materials for cabinets:

- > Mild steel, ideal for both indoor & outdoor use
- > Zintec is a zinc treated mild steel alloy, ideal for outside use
- > CR12 is a low grade stainless steel ideal for harsh environment (such as costal sites)

All cabinets are made from 2mm thick material that is both folded, welded, powder coated or painted to your specific RAL code.

All cabinets are manufactured to an IP55 rating.

IP55 Explained:

5 Dust Protected Ingress of dust is not entirely prevented, but it must not enter in sufficient quantity to interfere with the satisfactory operation of the equipment; complete protection against contact.

5 Water jets. Water projected by a nozzle (6.3mm) against enclosure from any direction shall have no harmful effects.

