

Information Sheet for Generator Connection Point

GCP Product Description

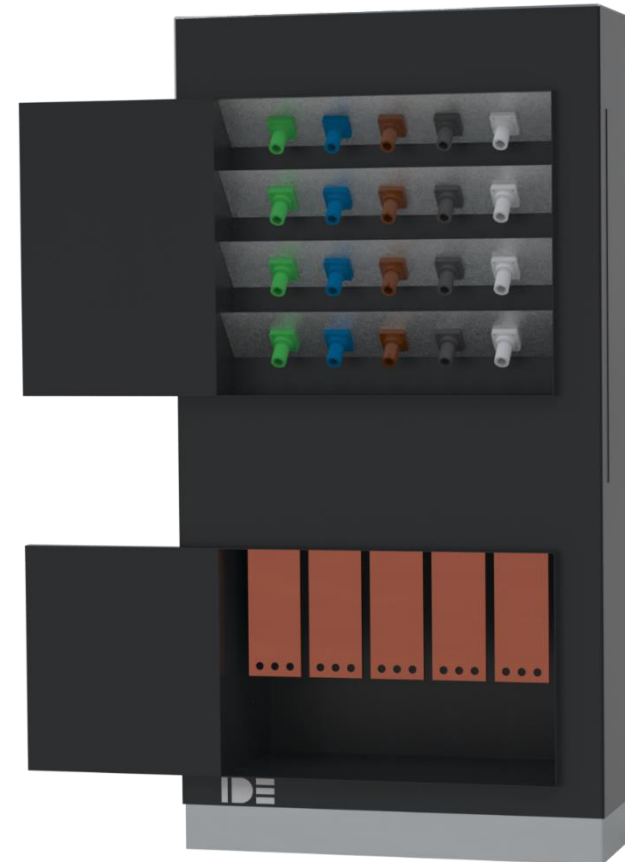
Our 1600A Generator Connection Point can be fitted inside or outside of a building, allowing a safe and quick connection of a back-up generator to your facility's electrical system when required. Equipment housed within a floor standing steel enclosure. Powerlock type (Drain) connections to 100x10mm copper bars with 300mm spreading distance for bottom entry outgoing cables.

Features and Benefits:

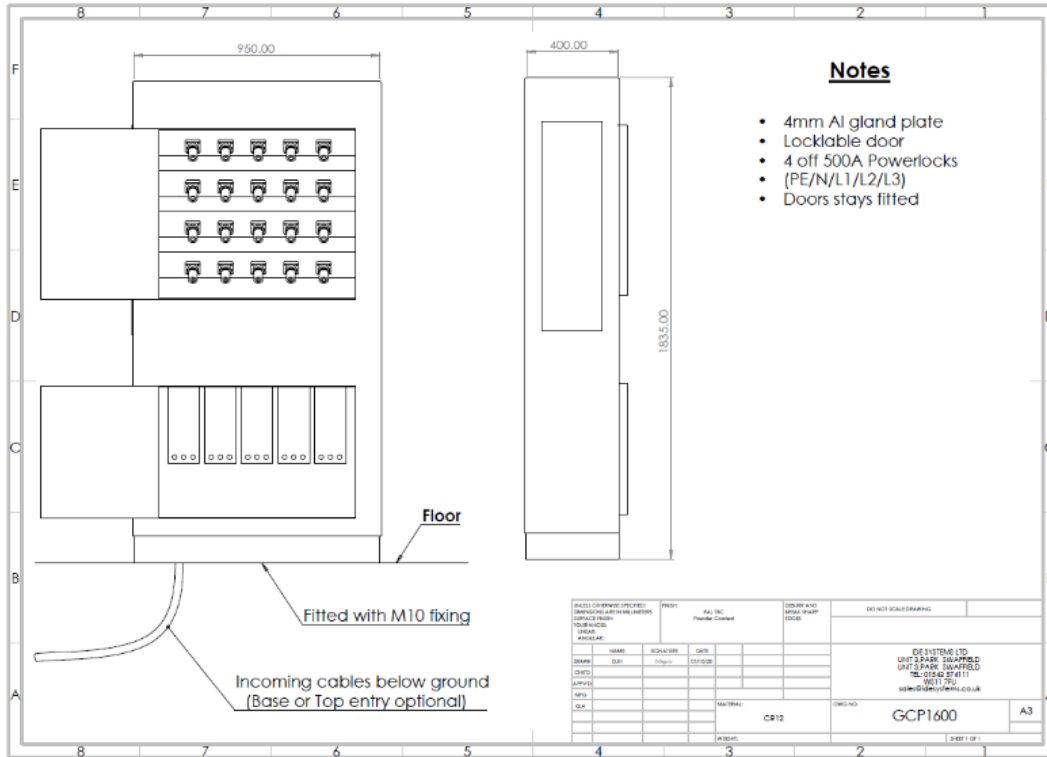
- > Powerlock type (Drain) connections for a quick easy connection
- > Powder coated Stainless Steel enclosure
- > Slim Design
- > Floor standing steel enclosure fitted with M10 fixing points

Popular Applications

The Generator Connection Box is designed to allow easy connection of a generator to restore power to critical applications such as hospitals, schools, airports, banks, and other commercial facilities. This removes the need for an electrician to make the connection.



Technical Information



Product Socket Configuration

Inlet	Phase	Protection	Earth Leakage	IP Rating
4 x 500A 3P+N+E Powerlock type (Drain)	3	N/A	N/A	54
Outgoing	Phase	Protection	Quantity	IP Rating
Fully rated copper capable to suit 4 x M12 connections	3	N/A	N/A	N/A

Other Features and Mechanical Information

Phase Indication	Power Indication	Lifting	Frame
On request	On request	Lifting points	On request
Enclosure	Overall IP Rating	Size (mm)	Weight (kg)
Powder Coated Stainless Steel (RAL 7021)	54	H1835xW950xD400	Approx. 150kg
Power Monitoring	Warranty	Base or Top Entry:	
On request	12 months	On request	

Manufacturing Standard
 IEC 61439: Part 2 etc
 ISO 9001-2015
 GCP1600 Version1 17/03/2021