

Information Sheet for Load Bank Connection

Load Bank Connection Product Description

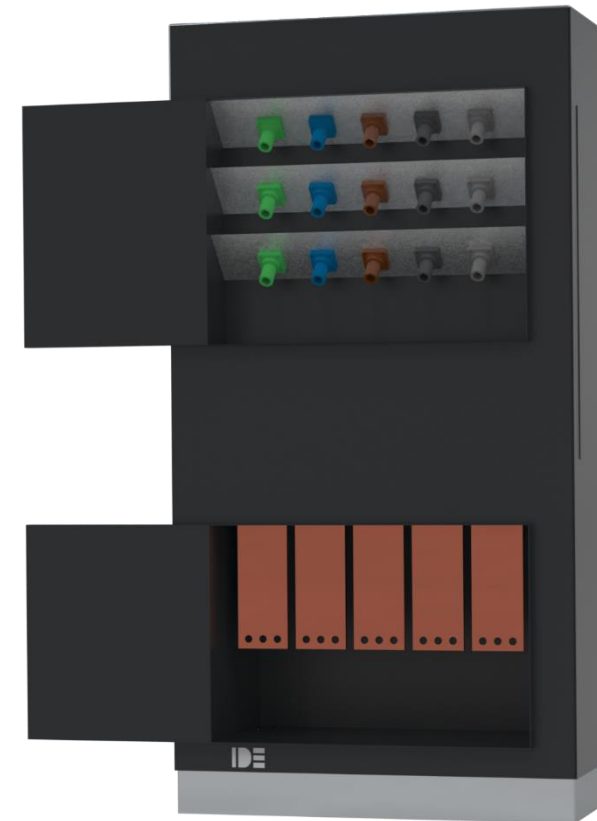
Our Load Bank Connection (LBC) can be fitted inside or outside of a building, allowing a safe and quick connection of a testing load bank to your back-up generator when it is undergoing testing/maintenance.

Features and Benefits:

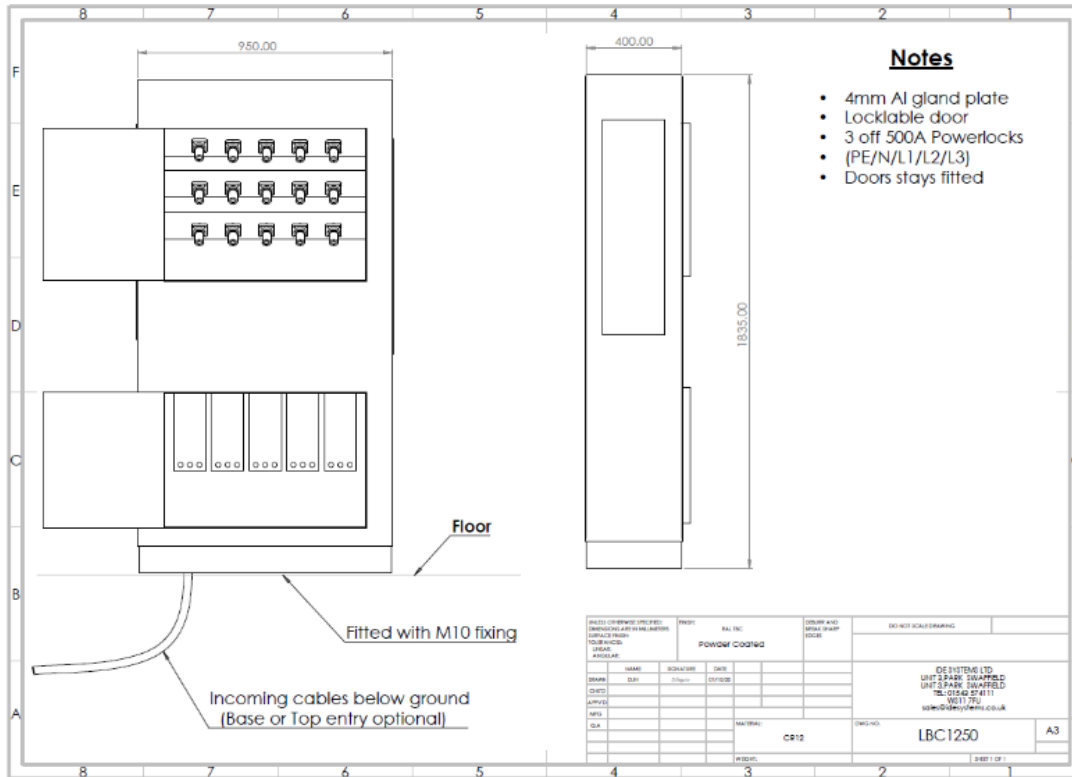
- > Powerlock type (Source) connections for a quick easy connection
- > Powder coated Stainless Steel enclosure
- > Floor standing steel enclosure fitted with M10 fixing points
- > Slim Design

Popular Applications

The LBC is used when the back-up generator is undergoing testing/maintenance. Regular load banking is strongly advised to ensure that your generator will perform when the need arises. Using a LBC reduces connection times and speeds up the load bank testing process. It can also remove the need for cables to run throughout the building to the back-up generator.



Technical Information



Product Socket Configuration

Inlet	Phase	Protection	Earth Leakage	IP Rating
Fully rated copper capable to suit 3 x M12 connections	3	N/A	N/A	N/A
Outgoing	Phase	Protection	Quantity	IP Rating
3 x 500A 3P+N+E Powerlock type (Source)	3	N/A	N/A	54

Other Features and Mechanical Information

Phase Indication	Power Indication	Lifting	Frame
On request	On request	Lifting points	On request
Enclosure	Overall IP Rating	Size (mm)	Weight (kg)
Powder Coated Stainless Steel (RAL 7021)	54	H1835xW950xD400	Approx. 150kg
Power Monitoring	Warranty	Base or Top Entry:	
On request	12 months	On request	

Manufacturing Standard
IEC 61439: Part 2 etc
ISO 9001-2015

LBC1250 Version1 17/03/2021