

Information Sheet for Load Bank Connection

Load Bank Connection Product Description

Our Load Bank Connection (LBC) can be fitted inside or outside of a building, allowing a safe and quick connection of a testing load bank to your back-up generator when it is undergoing testing/maintenance.

Features and Benefits:

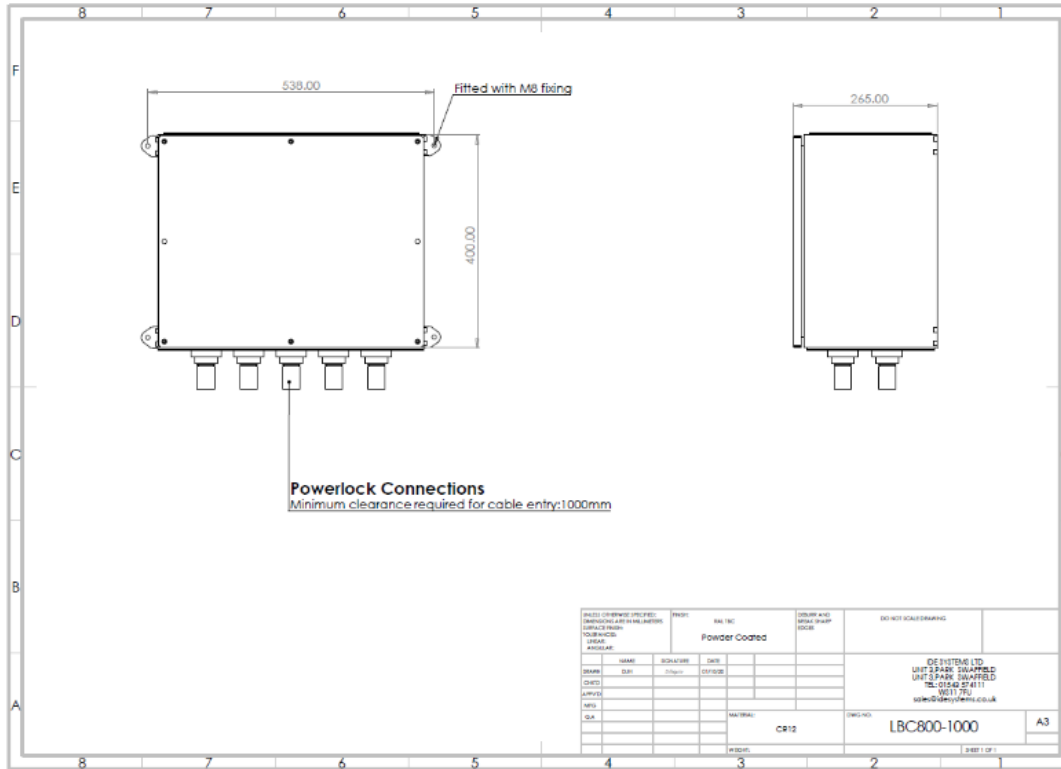
- > Indoor & Outdoor Use
- > Powerlock type (Source) connections for a quick easy connection
- > Powder coated Stainless Steel enclosure
- > Wall mounted fixed with M8 fixing points

Popular Applications

The LBC is used when the back-up generator is undergoing testing/maintenance. Regular load banking is strongly advised to ensure that your generator will perform when the need arises. Using a LBC reduces connection times and speeds up the load bank testing process. It can also remove the need for cables to run throughout the building to the back-up generator.



Technical Information



Product Socket Configuration

Inlet	Phase	Protection	Earth Leakage	IP Rating
Fully rated copper capable to suit 2 x M12 connections	3	N/A	N/A	N/A
Outgoing	Phase	Protection	Quantity	IP Rating
2 x 500A/800A 3P+N+E Powerlock type (Source)	3	N/A	N/A	54

Other Features and Mechanical Information

Phase Indication	Power Indication	Lifting	Frame
On request	On request	N/A	On request
Enclosure	Overall IP Rating	Size (mm)	Weight (kg)
Powder Coated Stainless Steel (RAL 7021)	54	H400xW538xD265	Approx. 24kg
Power Monitoring	Warranty		
On request	12 months		

Manufacturing Standard
IEC 61439: Part 2 etc
ISO 9001-2015

LBC800-1000A Version1 17/03/2021